

FITFLEET-EXCAVATOR-250HR-CVA

PM Checklist

● 2 ● 0 ● 98 ● 5

Inspection Number	18728539	Customer No	2969824372
Serial Number	JGP00164	Customer Name	AUSTRALIAN HAMMER SUPPLIES HIRE PTY LTD
Make	CATERPILLAR	Customer Email	harry.pillow@westrac.co m.au
Model	374	Work Order	SD43645
Equipment Family	Large Hydraulic Excavator	Completed On	26/08/2024 7:32:19 AM
Asset ID	AHSH107	Inspector	Harry Pillow
SMU	3717.23 Hours	PDF Generated On	26/08/2024
Location	129 Cleveland Rd, Cleveland Park, New South Wales 2530, Australia	Coordinates	20.0556774139404, - 34.5083512718275, 150.780836480533

Technician

HP

General Info & Comments

● General info/Comments NORMAL

TASK SAFETY INSTRUCTIONS - Revision Number: 02 Date: 25th September 2023

- 1.1 Wear Correct PPE at all times PASS
- 1.2 All isolation and safe work procedures must be followed PASS
- 1.3 Identify task hazards and controls utilising hierarchy or controls model PASS
- 1.4 Ensure a competent operator and spotter is utilised to move mobile equipment PASS
- 1.5 Ensure all mobile equipment is fundamentally stable PASS
- 1.6 Ensure three points of contact is maintained during access and egress PASS
- 1.7 Ensure acceptable housekeeping standards are maintained at all times PASS

MACHINE GENERAL RUNNING CHECKS

●	2.1 Check all work lights, beacon & reverse alarm for operation	PASS
●	2.2 Test all dash warning lights, gauges and audible alarms for correct operation	PASS
●	2.3 Check idle timer for correct shut down operation	N/A
●	2.4 Check operation of all three emergency stop buttons	PASS
●	2.5 Check operation of horn	PASS
●	2.6 Check operation of reverse camera	PASS
●	2.7 Check alternator charge voltage - ACTUAL_____V	PASS
●	2.8 Check operation of auto grease system by manually activating timer	PASS
●	2.9 Check fire system control panel for 'Normal'	PASS
●	2.10 Test hydraulic lock out function operation	PASS
●	2.11 Check window wiper and washer operation	PASS

PM SAFETY GENERAL INSPECTION

●	3.1 Visually ensure all guards, shields and covers are in place and in good condition to ensure personal are protected from rotating parts	PASS
●	3.2 Check condition of machine identification signage	PASS
●	3.3 Inspect ROPS/FOPS condition	PASS

PM BRAKING SYSTEM

●	4.1 Test travel brakes – Ensure the machine comes to a stop when travel controls are released	PASS
---	---	------

- 4.2 Test travel brakes – Ensure the brakes hold on a suitable slope PASS

PM FIRE SUPPRESSION SYSTEM

- 5.1 Ensure fire suppression bottle and components are securely mounted and in good condition PASS

- 5.2 Ensure fire suppression is correctly charged PASS

- 5.3 Inspect last charge date - ACTUAL _____ PASS

- 5.4 Check all fire extinguishers are securely mounted and in good condition PASS



- 5.5 Check all fire extinguishers are correctly charged PASS




- 5.6 Inspect last charge date - ACTUAL _____ PASS



PM ENGINE

- 6.1 Perform engine valve set N/A
- 6.2 Inspect air intake system hoses, pipes, clamps for signs of dirt ingress PASS
- 6.3 Inspect engine for oil or fuel leaks PASS

Comments: Oil leaks on rocker cover
- 
- 6.4 Inspect engine components for missing clamps PASS
- 6.5 Inspect exhaust system for signs of leaks, loose bolts or missing clamps PASS
- 6.6 Inspect turbo for security and signs of leaks PASS
- 6.7 Inspect condition of exhaust lagging PASS
- 6.8 Inspect engine mounts for condition and loose hardware PASS

●	6.9 Inspect alternator mount condition and adjustment	PASS
---	---	------

●	6.10 Inspect wiring condition and security	PASS
---	--	------

●	6.11 Inspect engine belts	PASS
---	---------------------------	------

PM ENGINE COOLING SYSTEM		
--------------------------	--	--

●	7.1 Check coolant level	PASS
---	-------------------------	------

●	7.2 Check condition of radiator cap	PASS
---	-------------------------------------	------

●	7.3 Check condition of radiator core	PASS
---	--------------------------------------	------

●	7.4 Check cooling system for signs of leaks	PASS
---	---	------

●	7.5 Check hose and clamp condition	PASS
---	------------------------------------	------

●	7.6 Inspect fan condition and operation	PASS
---	---	------

●	7.7 Inspect radiator and fan guard condition	PASS
---	--	------

PM SWING TRANSMISSION		
-----------------------	--	--

●	8.1 Inspect swing transmission for signs of leaks	PASS
---	---	------

●	8.2 Inspect swing transmission oil level	PASS
---	--	------

PM HYDRAULIC SYSTEM		
---------------------	--	--

●	9.1 Check hydraulic oil level	FAIL
---	-------------------------------	------

Comments: Machine took 40L		
----------------------------	--	--



- | | |
|---|------|
| ● 9.2 Inspect hydraulic cylinders for leaks and security | PASS |
| ● 9.3 Inspect hydraulic hoses for leaks, damage, security | PASS |
| ● 9.4 Inspect hydraulic pump condition, leaks, security | PASS |
| ● 9.5 Check Pilot Accumulator operation as per OEM Maintenance Procedure - Test Boom Down Functionality with engine off | PASS |

PM FINAL DRIVES

- | | |
|---|------|
| ● 10.1 Inspect LHS final drive mount condition for leaks and security | PASS |
| ● 10.2 Inspect LHS oil level and mag plug condition | PASS |
| ● 10.3 Inspect RHS final drive mount condition for leaks and security | PASS |
| ● 10.4 Inspect RHS oil level and mag plug condition | PASS |

PM UNDERCARRIAGE

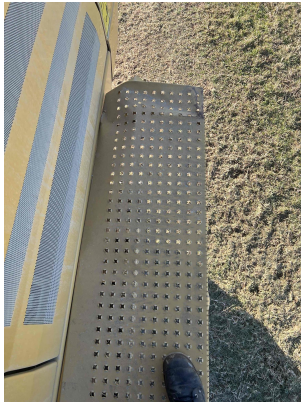
- | | |
|--|------|
| ● 11.1 Inspect LHS track tension | PASS |
| ● 11.2 Inspect RHS track tension | PASS |
| ● 11.3 Inspect tracks for loose/missing bolts | PASS |
| ● 11.4 Inspect load and carrier rollers for signs of leaks | PASS |

- | | | |
|---|---|------|
| ● | 11.5 Inspect idlers for signs of leaks | PASS |
| ● | 11.6 Inspect sprocket segments condition | PASS |
| ● | 11.7 Inspect track frame for cracks, lose or missing hardware | PASS |

PM FRAME AND BODY

- | | | |
|---|---|------|
| ● | 12.1 Check panels for damage and security | FAIL |
|---|---|------|

Comments: Door catches because panel has been hit



- | | | |
|---|---|------|
| ● | 12.2 Check access steps and walkway condition | PASS |
| ● | 12.3 Inspect boom condition – cracks, missing clamps, damaged pipes, excessive movement, lubrication | PASS |
| ● | 12.4 Inspect stick condition – cracks, missing clamps, damaged pipes, excessive movement, lubrication | PASS |
| ● | 12.5 Inspect quick hitch condition and operation | PASS |
| ● | 12.6 Inspect bucket condition – cracks, wear, damage, mounts | PASS |
| ● | 12.7 Inspect GET condition and hardware | PASS |

PM ELECTRICAL SYSTEM

- | | | |
|---|------------------------------|------|
| ● | 13.1 Check battery condition | PASS |
|---|------------------------------|------|

●	13.2 Check battery terminal condition	PASS
●	13.3 Check battery security	PASS
●	13.4 Check battery box drain is clear	PASS
●	13.5 Check wiring condition and security	PASS
PM GREASE SYSTEM		
●	14.1 Check all points for acceptable lubrication	PASS
●	14.2 Inspect grease system operation	PASS
●	14.3 Check grease line condition	PASS
●	14.4 Refill grease tank	N/A
●	14.5 Lubricate bucket linkage	PASS
●	14.6 Lubricate blade linkage	PASS
●	14.7 Lubricate boom & stick linkage	PASS
●	14.8 Lubricate swing bearing	PASS
PM OPERATOR STATION		
●	15.1 Check all doors for correct opening and closing adjustments and operation	PASS
●	15.2 Inspect condition of door seals	PASS
●	15.3 Check window glass and seal condition	PASS
●	15.4 Check mirror condition and adjustments	PASS

●	15.5 Fill window washer reservoir	N/A
●	15.6 Inspect air con vents condition	PASS
●	15.7 Inspect seat belt and mounting hardware	PASS
●	15.8 Inspect seat condition, operation and mounting	PASS
●	15.9 Replace cabin A/C filter	N/A

OIL SAMPLING

●	16.1 Engine	PASS
---	-------------	------

PM POST SERVICE INSPECTION CHECKS

●	17.1 All inspections have been completed and rectified as required	PASS
●	17.2 All safety related defects have been repaired or reported	PASS
●	17.3 All defects have been noted and reported	PASS
●	17.4 All fluids are at correct level and drain plugs tight	PASS
●	17.5 All oil samples have visually been inspected and any notable signs of contamination have been reported	PASS
●	17.6 All replaced filters have been cut and inspected and photos added to CAT Inspect and reported to supervisor	PASS
●	17.7 Machine has been recommissioned and ready for operation	PASS
●	17.8 PM service notification marked off in Vision Link	COMPLETED

DEFECTS IDENTIFIED

●	18.1 DEFECTS IDENTIFIED	PASS
---	-------------------------	------